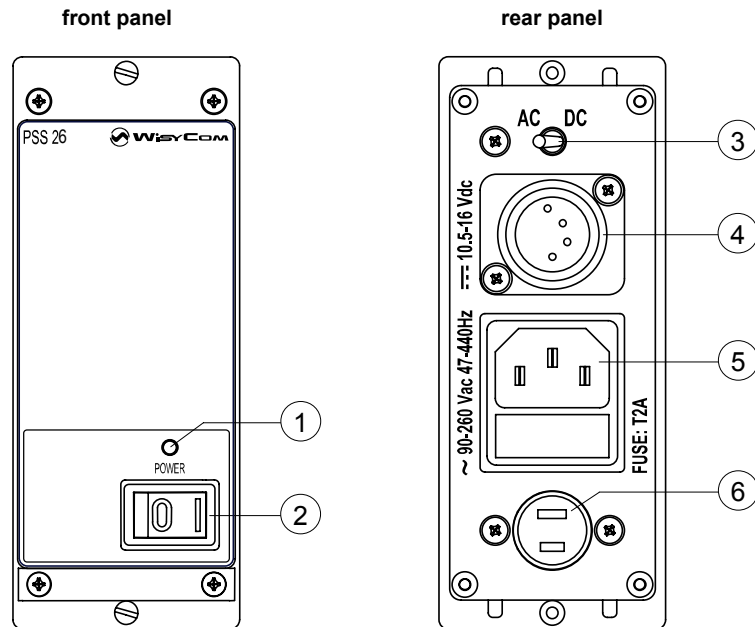


PSS 26 - POWER SUPPLY MODULE (MAINS / 12Vdc)



- 1) INDICATION: power on (red Led).
- 2) SWITCH: power on / off.
- 3) SELECTOR: power source (AC MAINS / DC).
- 4) CONNECTOR: DC input (10.5 ÷ 16 Vdc)
 - pin 1,3 = -V (ground)
 - pin 2,4 = +V.
- 5) CONNECTOR: mains input, with mains fuse (connection to ground is needed).
- 6) CONNECTOR: 12 Vdc nom. output, to the rack.

TECHNICAL SPECIFICATIONS

- Input mains power : 90 ÷ 264 Vac - 40 VA max.
- Input mains fuse : T2A.
- Output power : 12Vdc (± 5%) - 2.5 A max.
- Operating temperature : -10 ÷ +55 °C.
- Size : 123 x 49 x 160 mm (n. 1 module wide).
- Weight : 650 g approx.
- Complies with : EN 61000-3-2
EN 60950-1