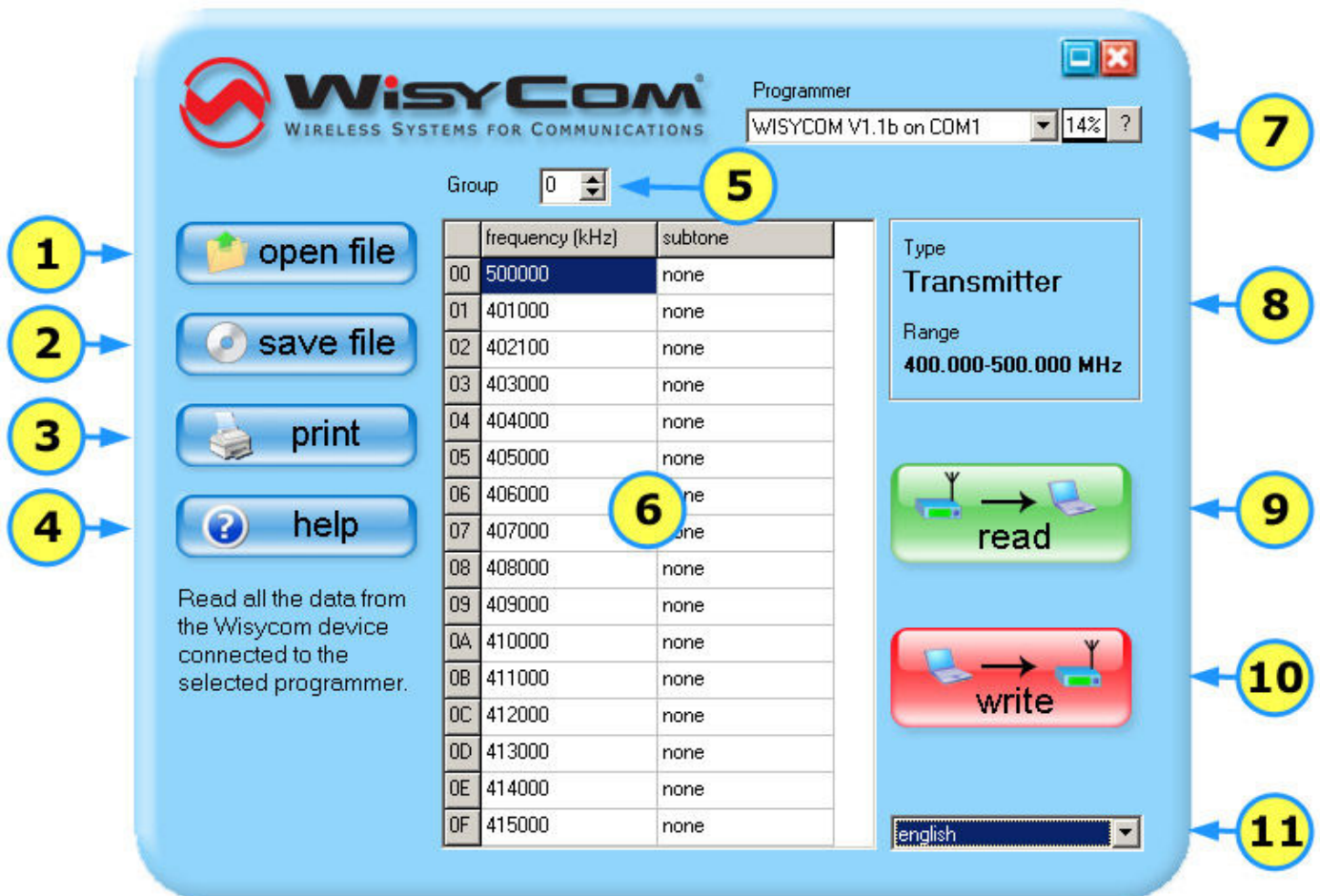


# Wisycom Programmer

Software for the programming of Wisycom devices



*Main window screenshot*

On the main window of the software are present more buttons, used to do a specific action. It will follow a list of the actions associated to their controls, in the order:

- 1 **OPEN FILE** - It is possible to load a project file that was be saved before with the button [save file \(2\)](#). Before you load a file it's necessary that a device read was be done, using the [read button \(9\)](#), so the software can recognize model and characteristics of the Wisycom device you have connected to the programmer. Once you selected the file to be opened, the software compares the data in the file with that of the device you want to reprogram. If the device used when the file was saved is of the same type and model of which is connected to the programmer, the setup data is loaded directly. However, if there are differences (other model,

different type or number of channel-groups) the software offers to the user the possibility to load selectively the needed data, showing a form for manual import. Here all the groups present on the file are listed on the left, together with their properties, while on the right it is possible to choose the target group of the device, that has to be reprogrammed. Please note that the software checks in any case the data to be loaded, assuring congruence of the hardware properties (frequency limits, type, and so on).

- 2 **SAVE FILE** - This button allows the user to save to file all the current data. Please note that all the inserted data will be saved, no matter if they has been written/updated on the device or not. The saved data could be re-loaded when needed, using the function [open file \(1\)](#)
- 3 **PRINT** - The action allows the user to print an hardcopy of all the data currently inserted. Please note that all the inserted data will be saved, no matter if they has been written/updated on the device or not.
- 4 **HELP** - Shows this help page
- 5 **GROUP** - Permits to choose the current channel group. Relative data will be shown on the [main grid \(6\)](#) and on the [group properties table \(8\)](#).
- 6 **MAIN DATA GRID** - This grid shows channel frequencies and subtones relative to the current group, selected using the [group spin-button \(5\)](#). The grid allows, when possible, to change the present values, simply inserting a new value with the keyboard or pressing the fast hotkeys.  
**To change a frequency** is possible simply selecting the grid cell relative to the channel to be modified, then inserting a new numeric value (in kHz) followed by enter or by a cursor key, or even easier by clicking on an arrow button on the right of the selected cell. If the inputed frequency value is not tunable, because not multiple of the PLL step, this will be floor-rounded to the first valid value. Then will be possible to switch between previous/next allowed steps simply clicking on the arrow keys on the right of the selected cell. In the case it's inserted a frequency value that doesn't respect the frequency limits of the current group, showed on the [group properties table \(8\)](#), the wrong value will be blanked.  
**To modify a subtone associated to a channel** is possible choosing from available values. Please note that in many cases the subtone function is present on the device, but it's hardwired and it cannot be software modified: in this cases the value is correctly showed but any attempt of modify is refused by the software.
- 7 **PROGRAMMER** - The drop-down list allows the user to choose which programmer has te be used, in the case that more compatible units are connected to the personal computer at the same time. When the software is executed an internal routine scans all the available communication ports, searching for programming devices. If no one programmer is found, this list will be showed empty, thus the read/write will not be possible. In the case a connected programmer is not detected, please check all connection cables and the mains power supply or status of the batteries. Then start a **new scan** pressing the small button on the right with the "?" symbol. The vertical percentage bar shows the **battery status** of the selected programmer.
- 8 **GROUP PROPERTIES** - This table describe all the hardware data of the currently selected channel group. Frequency limits, type of group section and other relevant data are showed here.

- 9 **READ THE DEVICE MEMORY** - This function allows to read the data from the programmable device connected to the programmer selected with the [drop-down list \(7\)](#). In case of malfunction please check the correct connection of the programming cables and that the gold plated contacts are clean. In the case you are using a battery to supply you programmer, please check that it's not depleted. At the end of the read procedure, the software recognise automatically the type of the connected device.
- 10 **WRITE THE DEVICE MEMORY** - This function writes all the data (of all the channel-groups, not just of the selected one) in the memory of the connected device, thus allowing a complete re-programmation. **Warning!** The write operation **completely overwrites the present setup**, so before you start it be sure that all the old data are now un-necessary, or that you already saved it to file.
- 11 **LANGUAGE** - This software was developed to support different languages. To change the language please use the drop-down list to show all the available.

See also: [How to install USB Adapter drivers](#)